



# **SYRACUSE DIVISION BUNDLED BRIDGES**

**TAS 17-37B, Contract D800001**

## **DB CONTRACT DOCUMENTS**

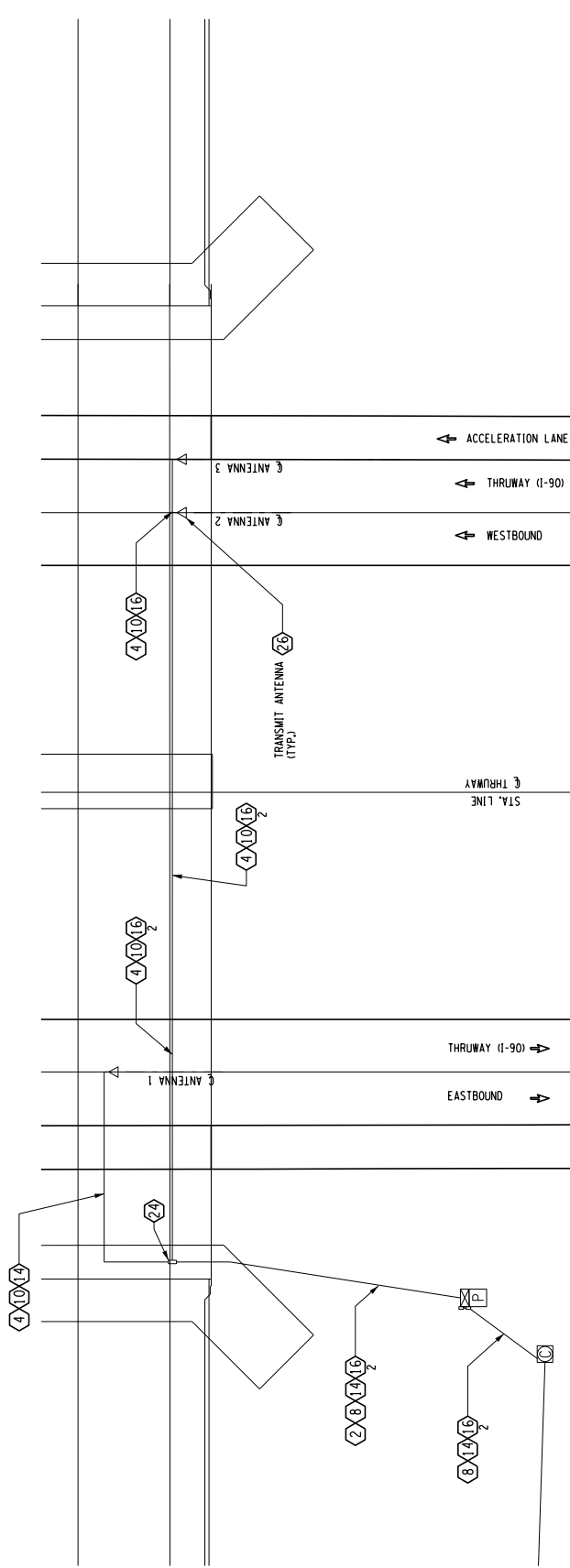
### **PART 6**

### **RFP PLANS**

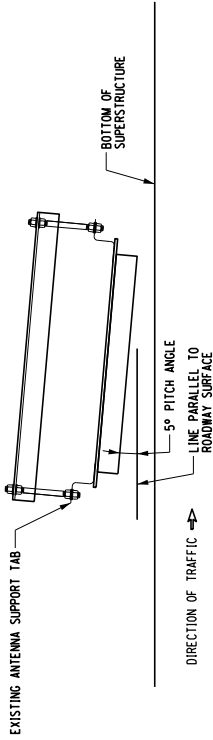
**Final, October 5, 2017**

**This page is intentionally left blank**

## **DIRECTIVE PLANS**



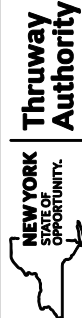
**ITS DIRECTIVE PLANS**



**NOTES:**

1. FOR VERTICAL RUNS FROM GROUND TO CABINET, RIGID PLASTIC CONDUIT SHALL TRANSITION TO STEEL.
2. ANY NEW HARDWARE THAT MAY BE REQUIRED FOR THE PROPOSED TRANSMIT SYSTEM RELOCATION, INCLUDING, BUT NOT LIMITED TO, CLAMPS, BOLTS, CABLES, BRACKETS, AND FASTENERS SHALL BE IN ACCORDANCE WITH ITEM 206.031.20025.
3. ALL EXISTING EQUIPMENT WITHIN THE CABINET, INCLUDING THE TRANSMIT TAG-READER, SHALL REMAIN AND BE PROTECTED BY THE CONTRACTOR THROUGHOUT THE DURATION OF THE CONTRACT.
4. ONLY WHERE ANTENNA WIRE EXITS THE MAIN CONDUIT RUN ON THE BRIDGE SUPERSTRUCTURE.
5. ALL CONDUIT, SUPPORTS AND ANTENNAE OVER THE THRUWAY MAINLINE SHALL HAVE A MINIMUM VERTICAL CLEARANCE OF 16.5' TO THE GROUND BELOW. IN ADDITION, NO FEATURE OF THE SYSTEM SHALL BE LOCATED BELOW THE BOTTOM FLANGE OF THE FASCIA GIRDER. FINAL VERTICAL POSITION SHALL BE APPROVED BY THE ENGINEER.
6. THE INTENDED POSITIONS FOR THE RELOCATED ANTENNAE ARE THE CENTERLINES OF THE THRUWAY TRAVEL LANES.

REF. ITEM	DESCRIPTION
(2) 206.03	CONDUIT EXCAVATION, BACKFILL & SURFACE RESTORATION
(4) 206.031.20025	CONDUIT INSTALLATION ON ABOVE GRADE STRUCTURES
(6) 680.520505	CONDUIT, RIGID PLASTIC, CLASS 1, 1/2" (NOTE 2)
(8) 680.520508	CONDUIT, RIGID PLASTIC, CLASS 1, 3" (NOTE 2)
(10) 680.520108	CONDUIT, METAL STEEL, ZINC COATED, 3"
(14) 680.77510025	TRANSMIT COAXIAL CABLE - TYPE A
(16) 680.77520025	TRANSMIT COAXIAL CABLE - TYPE B
(24) 683.50000025	NEMA 4X STAINLESS STEEL ENCLOSURE (16"x16"x8")
(26) 683.80700025	TRANSMIT ANTENNA



**Thruway Authority**

TAS 17-37B / D800001

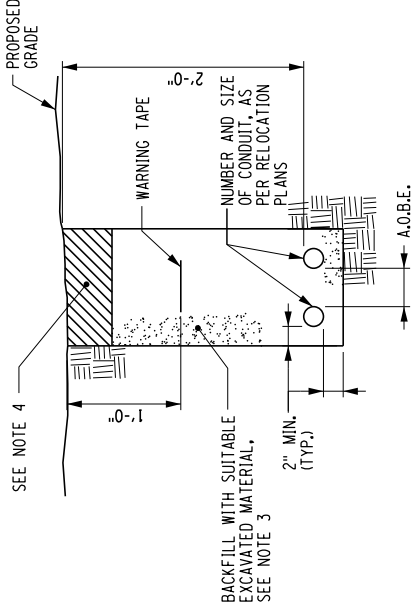
ITS DIRECTIVE PLANS

TITLE:

DRWN BY: TA	SCALE: N.T.S.	DWG. NO. UT-1
CHKD BY: TA	DATE: 9/27/17	

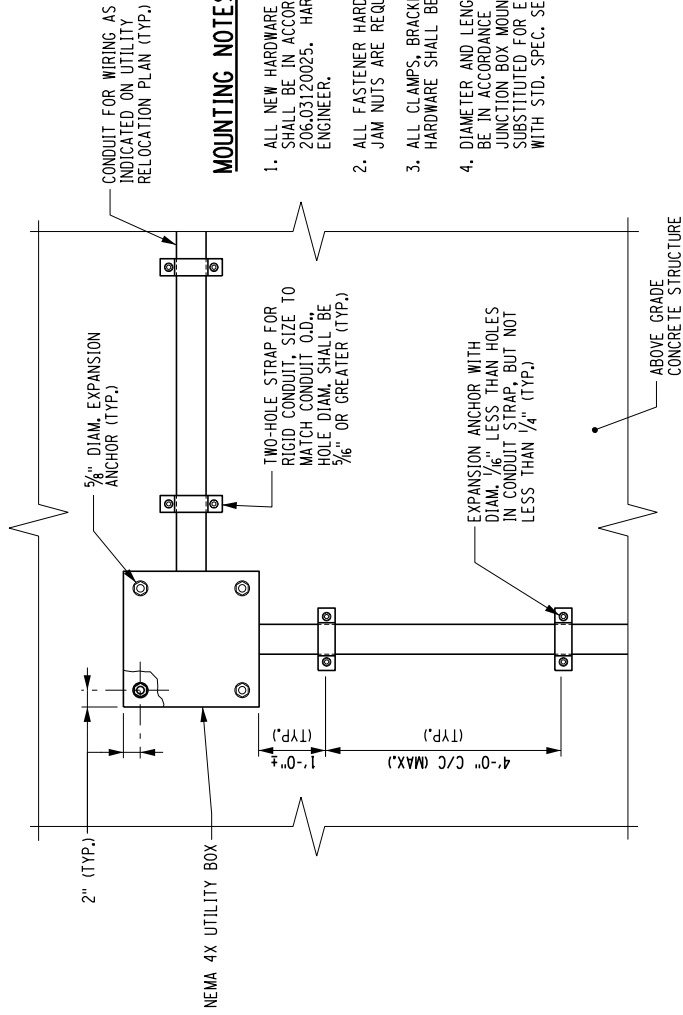
**CONDUIT EXCAVATION NOTES:**

1. ALL UNDERGROUND CONDUIT SHALL BE MARKED IN THE TRENCH USING MARKING TAPE AS SPECIFIED BY NYSTA. PAYMENT TO BE TO BE INCLUDED UNDER ITEM 206.03.
2. UNLESS OTHERWISE DIRECTED BY THE ENGINEER, THE MARKING TAPE SHALL BE PLACED APPROXIMATELY 12" BELOW FINISHED GRADE DURING BACKFILLING OPERATIONS.
3. SUITABLE BACKFILL MATERIAL SHALL BE GRANULAR SOIL FREE OF ROCK GREATER THAN 1/2" IN SIZE. PLACE IN 6" (MAX.) LIFTS AND TAMP AS DIRECTED BY THE ENGINEER.
4. RESTORE TOP SURFACE WITH 4" OF TOPSOIL IN ACCORDANCE WITH ITEM 206.03. TURF ESTABLISHMENT SHALL BE IN ACCORDANCE WITH ITEM 610.1601.




**TYPICAL CCTV AND TRANSMIT CONDUIT EXCAVATION AND BACKFILL DETAIL**

NTS



**MOUNTING NOTES:**

1. ALL NEW HARDWARE REQUIRED FOR THE MOUNTING OF CONDUIT AND BOXES SHALL BE IN ACCORDANCE WITH, AND PAID FOR UNDER, ITEM 206.03120025. HARDWARE MANUFACTURER SHALL BE APPROVED BY THE ENGINEER.
2. ALL FASTENER HARDWARE SHALL BE STAINLESS STEEL. LOCKWASHERS OR JAM NUTS ARE REQUIRED FOR ALL BOLTED CONNECTIONS.
3. ALL CLAMPS, BRACKETS, U-BOLTS, BACKPLATES, AND SIMILAR MOUNTING HARDWARE SHALL BE GALVANIZED.
4. DIAMETER AND LENGTH OF DRILLED HOLES FOR EXPANSION ANCHORS SHALL BE IN ACCORDANCE WITH MANUFACTURER'S RECOMMENDATIONS. FOR JUNCTION BOX MOUNTING, DRILLED AND GROUDED ANCHORS MAY BE SUBSTITUTED FOR EXPANSION ANCHORS, WITH ALL WORK IN ACCORDANCE WITH STD. SPEC. SECT. 586 AND PAID FOR UNDER ITEM 206.03120025.

 <b>Thruway Authority</b>		
TAS 17-37B / D800001		
TITLE: MISCELLANEOUS UTILITY DETAILS		
DRWN BY: TA	SCALE: N.T.S.	DWG. NO. UT-2
CHKD BY: TA	DATE: 9/27/17	

**TYPICAL JUNCTION BOX AND CONDUIT MOUNTING DETAILS**

ITEM 206.03120025

NTS

This page is intentionally left blank

## **INDICATIVE PLANS**

**There are no Indicative Plans for this project.**

This page is intentionally left blank